

6 CREATIVE WAYS FOR HAIRDRESSERS TO USE RPR MYCOLOUR NEUTRAL

When was the last time you used RPR MyColour Neutral? Did you know it can open the doors to endless possibilities?

With RPR MyColour Neutral you can create a fresh and quick transformation to dull coloured hair in various hair colouring scenarios. It is such a multipurpose tool to have handy in your colour room. You can also add RPR MyColour AMIPLEX when lifting for extra protection and amazing hair results.

Benefits Of Using RPR MyColour Neutral

- Add gloss to tired hair.
- Lift up to two shades while processing regrowth.
- Refresh existing reflect in one application.
- Cool or warm reflects when balancing colour tones.
- Refresh ombre, balayage, colour melt & root stretches.
- Bring tired blondes back to life.
- Great to create pastel tones in blondes.
- Colour corrections and transformations in one application.



Creative Examples For You To Try In Your Salon

1. Lighten reflect and add gloss

Roots: 20g 7.14 + 10g Neutral + 45g 10 vol

Ends: Neutral + 20 vol + AMIPLEX

Process: 35 minutes



2. Grey coverage + lighten & tone reflect

Roots: 30g 9.00 + 45g 30 vol

Ends: 20g Neutral + 10 9.32 + 2g LS + 48g 20 vol + AMIPLEX

Process: 45 minutes



3. Colour correction

20g Neutral + 20g LS + 60g 30 vol + AMIPLEX

Process: 30 minutes



4. Refresh tone + shine

20g Neutral + 10g 9.12 + 5g PS + 52g 10 vol
Process 20 minutes



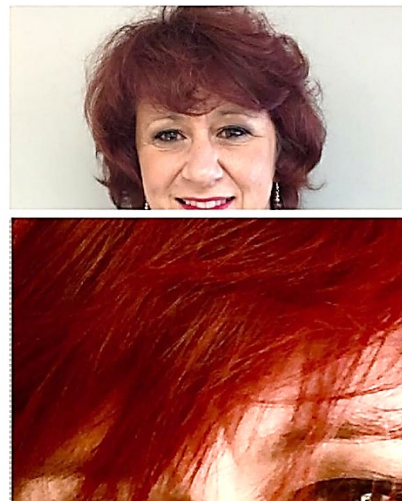
5. Colour correction

Roots: 30g 7.111 + 45g 10 vol
Mid: 20g Neutral + 15g LS + 5g 8.111 + 60g
30 vol + AMIPLEX
Ends: 10g neutral + 9g 9.12 + 1g LS + 30g 20
vol + AMIPLEX
Process: 35 minutes



6. Violet to Red

Roots: 10g 6.00 + 20g 5.66 + 45g 10 vol
Ends 1: 8g Neutral + 2g Red + 12g 40 vol +
AMIPLEX
Ends 2: 8g 6.666 + 2g Red + 12g 40 vol +
AMIPLEX
Process: 45 minutes



It's easy to transform any colour by simply adding
RPR MyColour Neutral to your creative recipes.

TRY IT TODAY!

www.rprhaircare.com.au

RPR Hair Care 16 Edgecombe Crt, Moorabbin, Vic 3189
(03) 9556 0900 | sales@rprhaircare.com.au